



PACIFIC  
CATASTROPHE  
RISK INSURANCE  
COMPANY

**The Role of PCRIC**  
**as a**  
**Development Insurer**  
**offering**  
**Parametric risk pooling Insurance**

19<sup>th</sup> February 2025



PACIFIC  
CATASTROPHE  
RISK INSURANCE  
COMPANY



# The Establishment:

## FEMM 2015 Decision

**PCRIC**  
(Regional Org  
2016)  
With a  
mission/  
Objective

**Closing  
the Gaps**

Increase the range of Disaster risk knowledge/education assessment tools and risk transfer products offered to the region

To be the regional leader and partner of choice in cost-efficient disaster risk transfer

To provide catastrophe risk pool insurance against natural disasters with immediate liquidity payment to governments deliver relief effort

# The Governance Structure

Council of Members - PCRIF

PCRAFI Member Countries



Donor Partners



Board of Directors

&

PCRIF Team





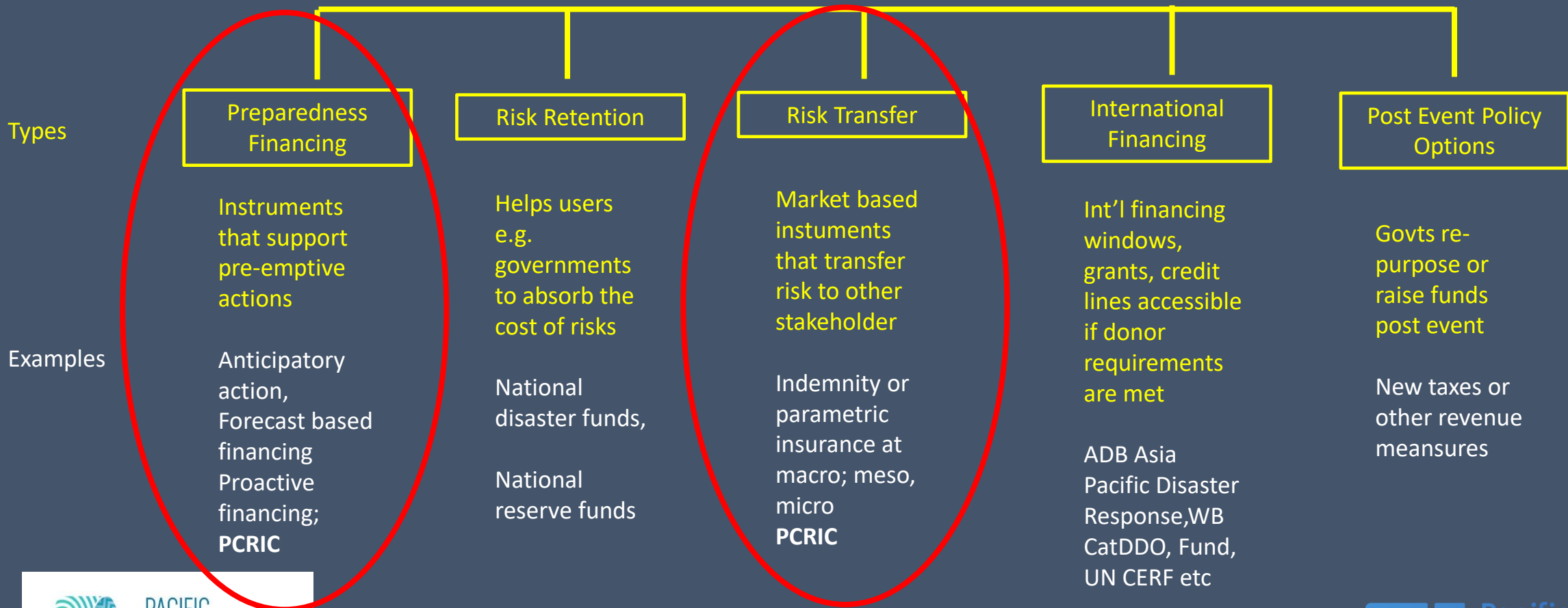
Where is PCRIC in the CDRF  
landscape?

# CLIMATE & DISASTER RISK FINANCING- instruments

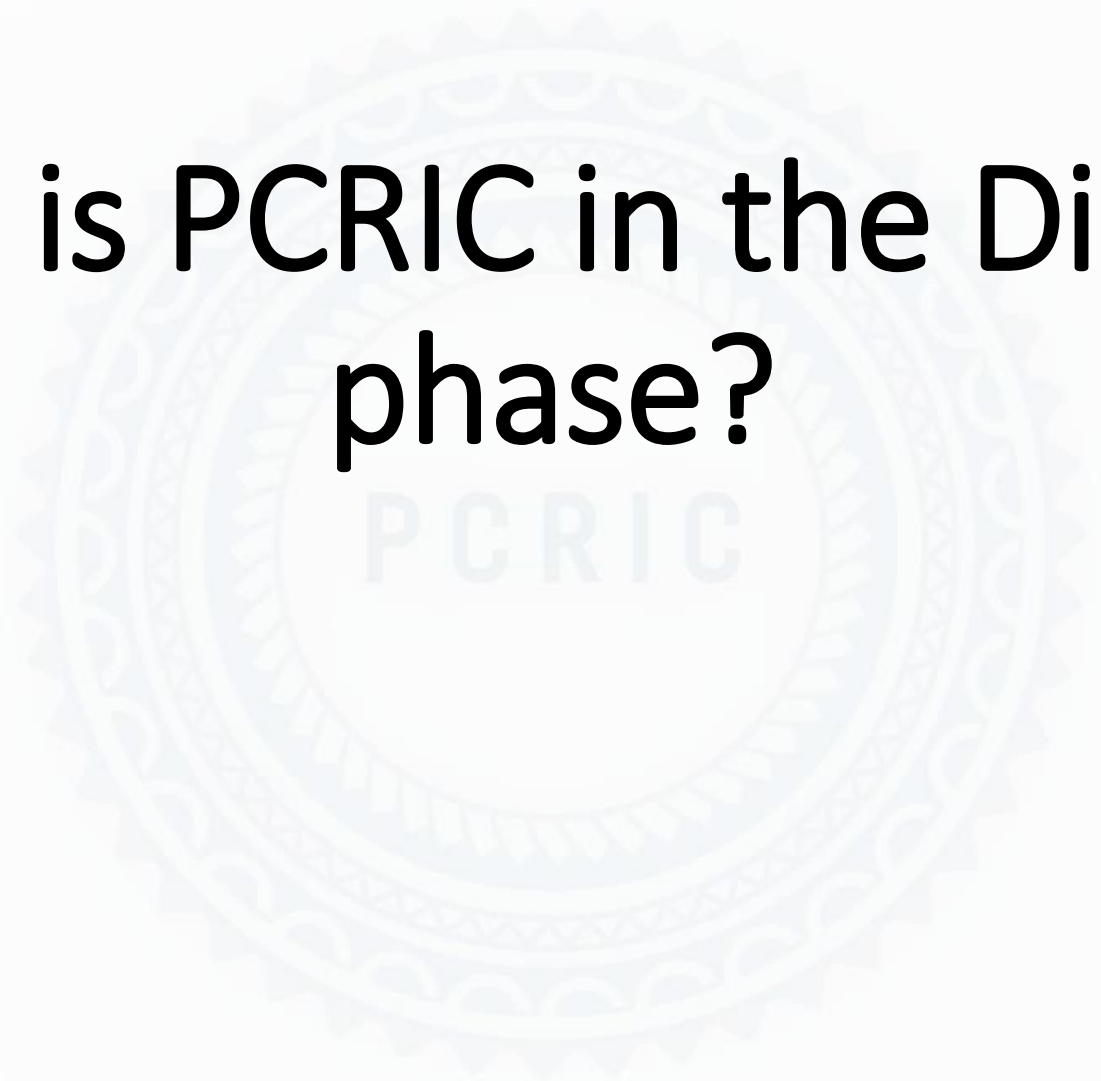
## Where is PCRIC in the CDRF landscape?

### Disaster Risk Financing

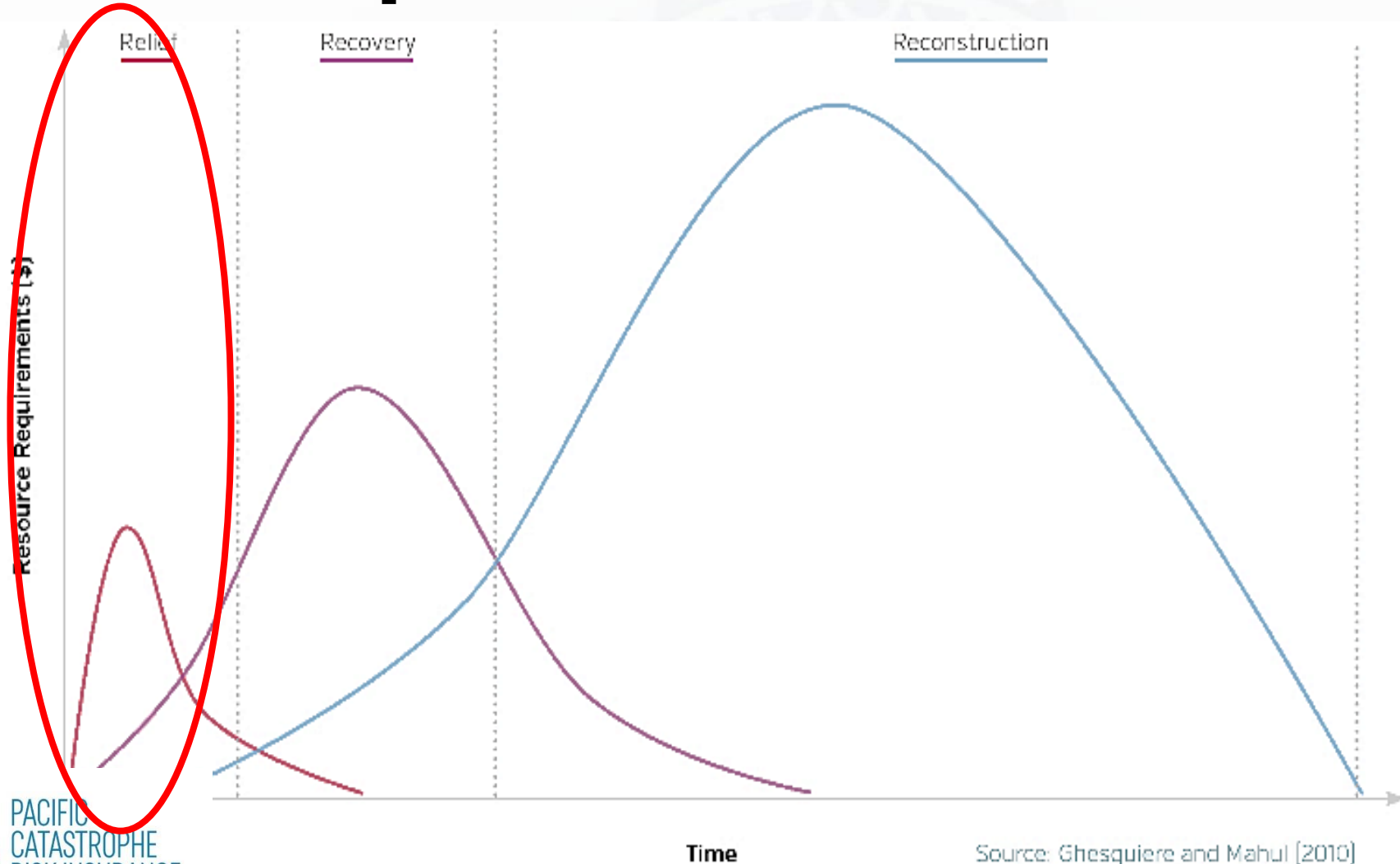
Financial protection for disaster response



**Where is PCRIC in the Disasters  
phase?**



# PCRIC Entry Point; Disasters' Three Phases; Core Principles:



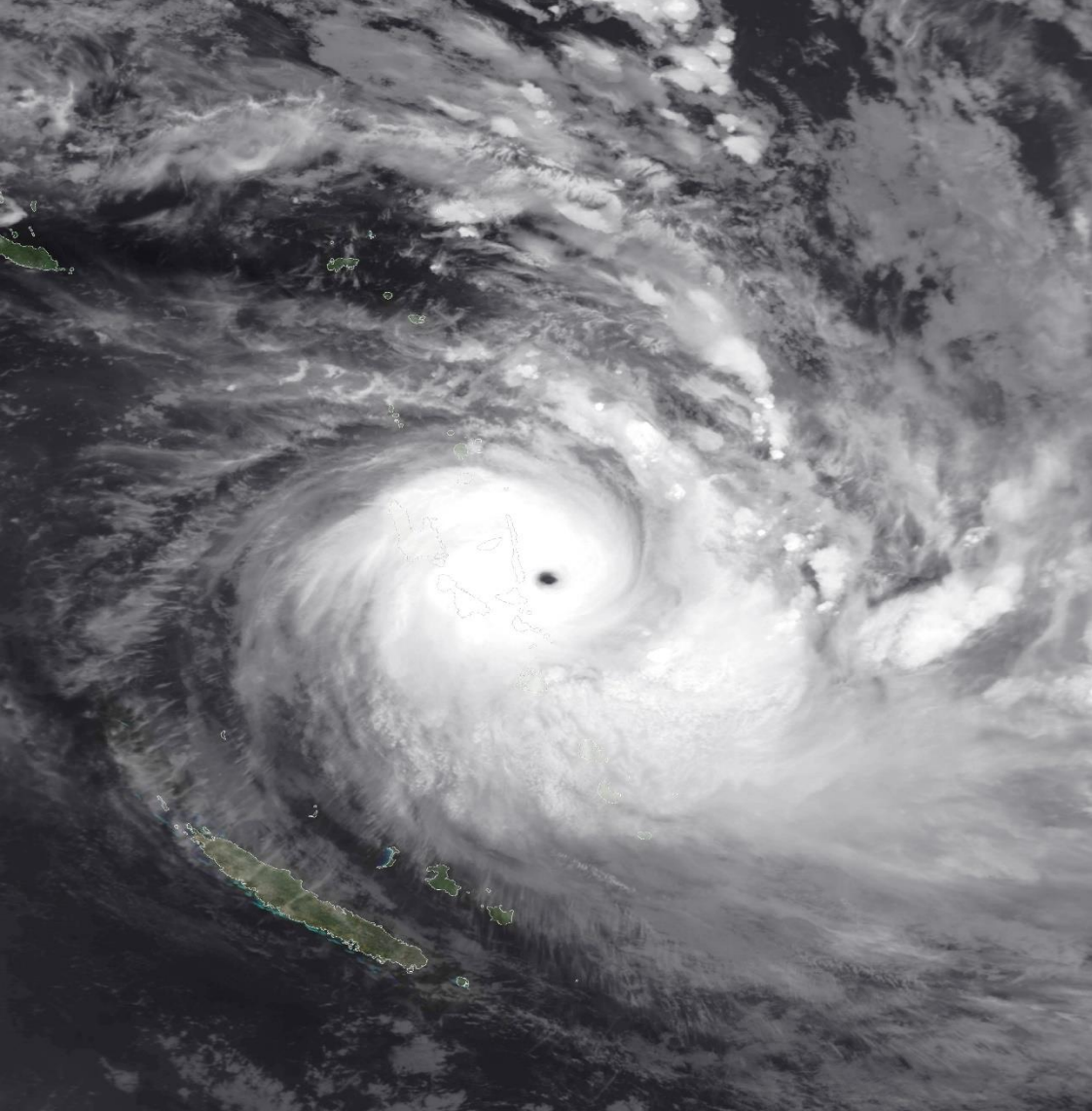
Speed matters, but not all resources are needed at once.



# PCRIC Strategic Roles

# PCRIC Specific Roles

- A captive regional parametric insurance company
- Provide sovereign CDRF products to PICs by developing and providing parametric policies/products
- Provide immediate cash to PICs following an applicable natural events
- Act as a form of direct budget support to the government to finance the relief needs post disaster
- Building long term resilience
- Enhance adaptability to climate change thru preparedness and proactive financing
- Provide proactive financing and anticipatory financing tools
- Education and Capacity Building program
- Identifying country risks and quantifying risk reduction contribution



## **Current products**

Cyclone, Earthquake, Xrainfall, Tsunami and Drought

## **Current Council Members**

Cook Islands, Fiji, Samoa, Tonga, Niue, PNG, RMI,  
Vanuatu

## **Current policyholders**

Cook Islands, Fiji, Samoa, Tonga, Niue, PNG n Vanuatu

## **Possible new policyholders**

RMI, Nauru, Solomon Islands, FSM, Kiribati, Tuvalu,  
Tuvalu

## **Current coverage and Potential**

SOEs, Sectors, Utilities, and NGOs

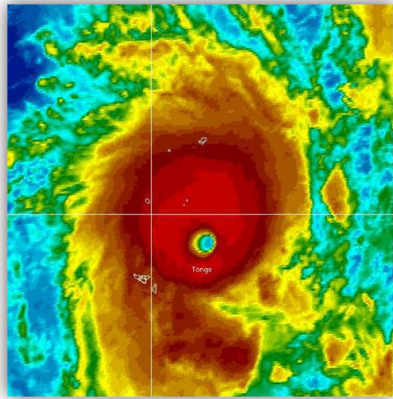
## **Education n Capacity Building**

Scholarship, Internship and workshops

# PCRAFI/PCRIC claims paid to date

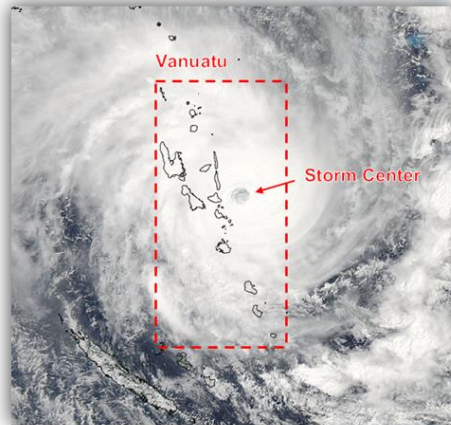
## 2014: TC Ian

- Tonga
- Payout of US\$1.27m



## 2015: TC Pam

- Vanuatu
- Payout of US\$1.9m



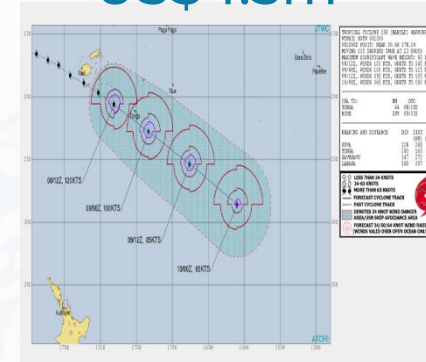
## 2018: TC Gita

- Tonga
- Payout of US\$3.5m



## 2020: TC Harold

- Tonga
- Payout of US\$4.5m



## 2024: EQ Vanuatu

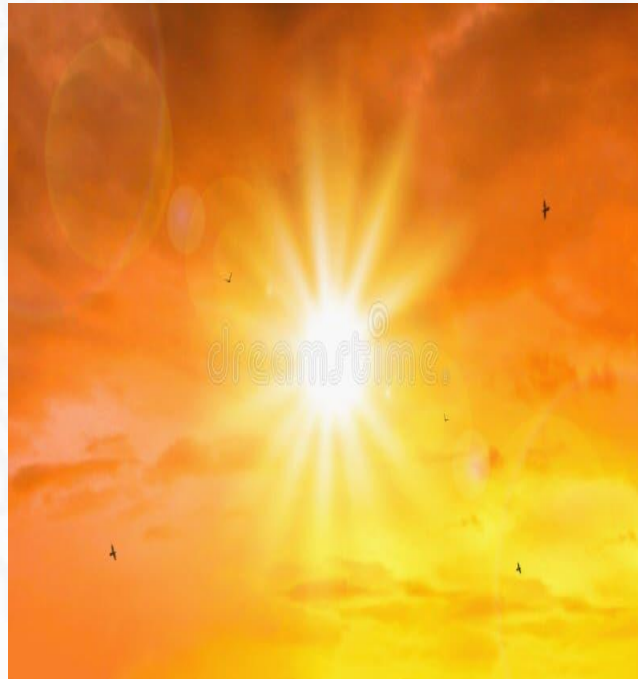
Payout of US\$1.2m





**New product**

Extreme Heat



**Potential product**

Other perils

# Strategic focus

- Revamp product and policy structure; cat-in-a-circle and people impact
- Secure premium finance
- Secure affordable pricing from the market
- Secure capital investment; underwriting more risks
- Country engagement
- Increase partnerships
- Education and Capacity Building program
- Product diversification; rolling out drought and development extreme heat
- Policy diversification; Sectors; utilities, NGOs etc
- Develop in-house capability to respond to ad-hoc requests
- Regional Reinsurer

Thank you

Q & A